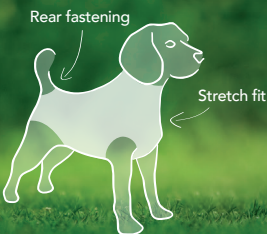


RECOVERY SUIT

Suitable for wound, hot spot and bandage protection, skin conditions, light incontinence, when in heat & more.



- ⊗ Freedom to eat and drink
- ⊗ Retains ability to move
- ⊗ Easy to use

PROTECTS WOUNDS, HOT SPOTS AND BANDAGES

- Reduces the annoyance and stresses your pet may experience, compared to wearing an Elizabethan collar.
- Helps prevent your pet from touching the affected area.
- Our exclusive design enables air to circulate around the wound whilst keeping it dry.
- Helps keep patients warm after an operation.

The inside of the suit is light coloured allowing any fluid discharge to be easily seen. If the wound leaks, a porous sheet or incontinence pad can be inserted inside the Recovery Suit or between the double layer on the belly section.

WHEN IN SEASON OR INCONTINENCE

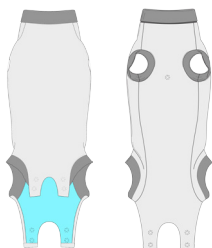
The Recovery Suit reduces the risk of blood or urine stains in your house. In contrast to standard shorts, it is very difficult for your pet to wriggle out of.

SKIN CONDITIONS

The Recovery Suit offers protection where it is required. It helps prevent possible damage to the skin caused by scratching or biting.

ALLOWS USE OF LITTER TRAY AND OUTSIDE

When walking your dog, only the rear end of the suit needs to be opened, simply roll the underside of the suit inwards and towards the belly. For most cats, the suit can remain fastened when using a litter tray, due to the specially tailored space under the tail.



WHY CHOOSE Suitical RECOVERY SUIT?

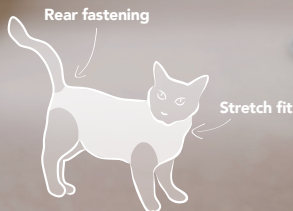
- ⊗ Multi-purpose use.
- ⊗ Easy-to-open rear fastening when nature calls.
- ⊗ Breathable lightweight four-way stretch fabric.
- ⊗ Inside pocket for pads.
- ⊗ Allows use of litter tray.
- ⊗ Machine washable.

Protect, Recover, Care, Comfort



RECOVERY SUIT

Suitable for wound, hot spot and bandage protection, skin conditions, light incontinence, when in heat & more.



- ✘ Freedom to eat and drink
- ✘ Allows use of litter tray
- ✘ Retains ability to move
- ✘ Easy to use



Colour-coded styles

- Blue camouflage, Pink camouflage and Black suits are for dogs.
- Black camouflage suits are for cats.

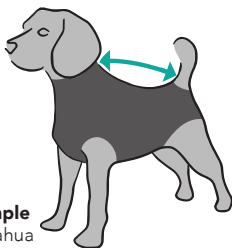
Length measured from nape of neck to base of the tail.

Sizes for DOGS

Size	Length
XXX Small:	22 - 35 cm (8.7 - 13.8 ")
XX Small:	33 - 42 cm (13.0 - 16.5 ")
X Small:	40 - 45 cm (15.7 - 17.7 ")
Small:	43 - 51 cm (16.9 - 20.1 ")
Small +:	49 - 57 cm (19.3 - 22.4 ")
Medium:	55 - 69 cm (21.7 - 27.2 ")
Medium +:	61 - 72 cm (24.0 - 28.3 ")
Large:	67 - 76 cm (26.4 - 29.9 ")
X Large:	74 - 82 cm (29.1 - 32.3 ")
XX Large:	80 - 92 cm (31.5 - 36.2 ")

Breed Example

Small Chihuahua
 Chihuahua, Toy Poodle
 Yorkshire, Terrier, Lhasa, Toy Poodle
 Maltaser, Pekingese, French Bulldog
 English Cocker Spaniel, Samojeed
 Schnauzer, Beagle, Poodle, Fox Terrier
 Collie, Schnauzer, Labrador
 Collie, Appenzeller, Boxer, Labrador
 Rottweiler, Golden Retriever, Sheep-dog
 Saint Bernard, Newfoundland

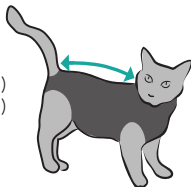


Sizes for CATS

Size	Length
XXX Small:	29 - 37 cm (11.4 - 14.6 ")
XX Small:	33 - 42 cm (13.0 - 16.5 ")
X Small:	40 - 45 cm (15.7 - 17.7 ")
Small:	43 - 51 cm (16.9 - 20.1 ")

Cat Size

Young Cat (kitten)
 Young Cat (kitten)
 Cat
 Cat



IMPORTANT

Your pet may need time to get used to the suit. Distracting your pet with a toy can help. It is recommended to supervise your pet especially when outdoors.